

Success Highlights

2019 - 2024



MIDWEST
QIN-QIO

Our Network and Impact

Who We Reached

3278 Providers

1795 Nursing Homes

144 Critical Access Hospitals

33 Rural Inpatient
Prospective Payment
System (IPPS) Hospitals

10 Tribal Hospitals

3 Rural Emergency
Hospitals

"The QIN-QIO's on-the-ground support for infection control, vaccine hesitancy and quality improvement has been transformative. They are accessible and have been a lifesaving difference in our community...I can confirm that the support, education and guidance we receive from them are unmatched nationally."

- Leslie Beth Eber, MD
CMDA Immediate Past President,
AMDA Medical Director of the Year for 2021

Key Outcomes

Patient Safety



25.1% ↓
C.diff
hospitalizations



14% ↓
All-cause
patient harm

Hospitalizations and Readmissions



18.2% ↓
Medicare
30-day
Readmissions



12.5% ↓
Avoidable
Hospitalizations



20% ↓ All-cause readmissions

Chronic Disease Management



37% ↓
Uncontrolled
A1c levels



60% ↓
Missing/
Uncontrolled
A1c level
documentation

Opioid Best Practices



Financial Impact

\$136.9M

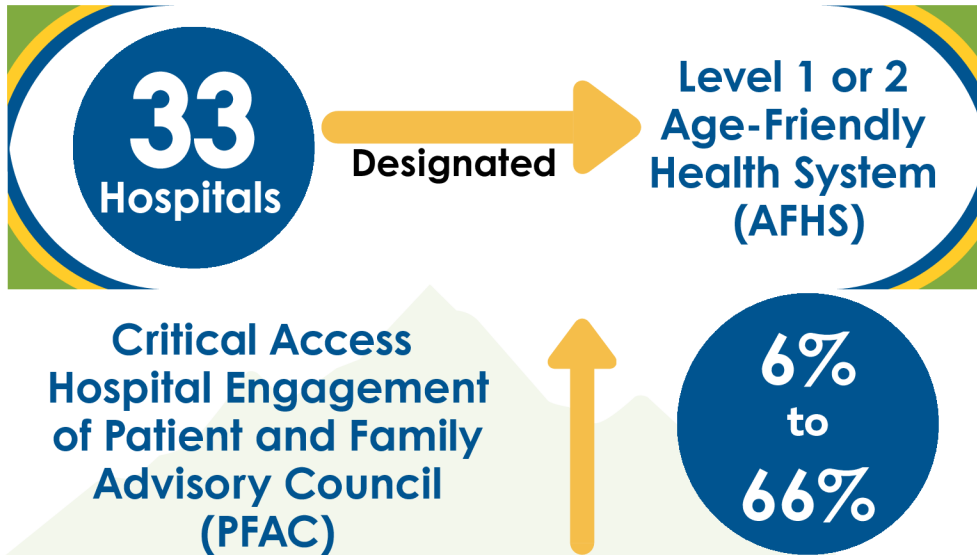
in avoided hospital
expenditures

\$57 saved for every **\$1 spent**

Demonstrated return on
investment (ROI)

Partnerships and Innovation

Strengthening Rural Health



Innovation and Resources

1,000+ **listeners** **“Shining a Light on Stigma”** podcast series

Developed unique *Emergency Preparedness Assessment* to help refine strategies and close gaps in preparedness



Voices from the Field

Provider Testimonials

“The QIN-QIO was instrumental in helping us in the maze of COVID-19 regulations and keeping our residents and staff safe.”

– Johanna Volm
VP of Clinical Services,
Care Initiatives

“There are not obvious answers to some of our challenges and the QIN-QIO helps us find the unique answers. Quality is not only their profession; quality embodies the people you’re working with.”

– Tandy Warren, RN, CIC
Director of Clinical Operations,
Lindsay Municipal Hospital

Partner Testimonials

“The QIN-QIO has demonstrated the capabilities, capacity, and expertise in championing CMS’s vision to foster healthcare transformation... Our work together will continue to help one of our most vulnerable populations...”

– Dr. Joanne Pike
President and CEO
Alzheimer’s Association

“What strikes me the most... is their accessibility and ability to integrate themselves to the needs of our healthcare providers and their residents. They understand what it means to care for people in this regulatory environment.”

– Jenny Albertson
Director of Quality and Regulatory Affairs,
Colorado Health Care Association and Center for Assisted Living

Results reflect 12th statement of work examples from Telligen and Mountain Pacific QIN-QIO and HQIC contracts.

This material was prepared by the Midwest QIN-QIO, the Quality Innovation Network-Quality Improvement Organization, under contract with the Centers for Medicare & Medicaid Services (CMS), an agency of the U.S. Department of Health and Human Services (HHS). Views expressed in this material do not necessarily reflect the official views or policy of CMS or HHS, and any reference to a specific product or entity herein does not constitute endorsement of that product or entity by CMS or HHS. This material is for informational purposes only and does not constitute medical advice; it is not intended to be a substitute for professional medical advice, diagnosis or treatment. 13thSOW-QIN-QIN-12/30/25-115